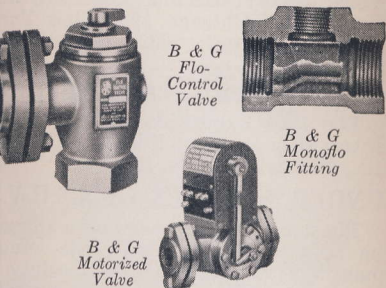


tt Company

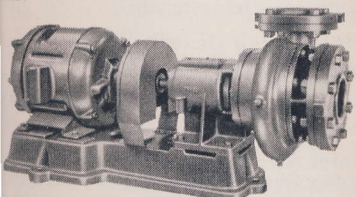
e, Illinois  
TEMS AND SPECIALTIES



**B & G Angle Flo-Control Valves**  
This valve, installed in the main, shuts off circulation to radiators when heat is not needed, permitting summer operation of a B & G Indirect Water Heater. It also helps maintain a uniform room temperature during the heating season.

**B & G Monoflo Fittings**  
B & G Monoflo Fittings permit the use of a single pipe main instead of the conventional flow and return lines. They are installed at the junction of the radiator risers to the single main and insure the diversion of the proper amount of heated water into each radiator. Savings in space, labor and materials are thus effected. Available in cast iron and copper.

**B & G Motorized Valves**  
Thermostatically operated valves which control boiler water flow through individual circuits of zoned heating systems.

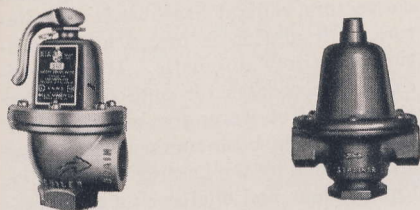


**B & G Universal Pumps**  
Designed for forced hot water heating systems in apartment and office buildings, factories, schools, etc. The installation can be operated as a large single zone or divided into several zones with circulation of pumped water in each unit controlled by a B & G Motorized Valve, operated by a zone thermostat.

HOT WATER SYSTEMS AND SPECIALTIES

B & G Relief Valves

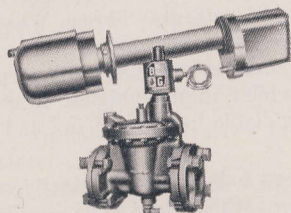
Designed and built to ASME requirements. Tested by National Board—labelled with ASME symbol. For relieving excess boiler pressures in hot water heating systems, and in the lines of service water systems. B & G Relief Valves have the design features which assure dependable service.



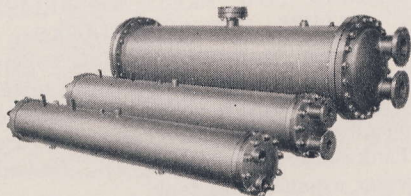
B & G Reducing Valves

Fast operating valves for keeping hot water heating systems properly filled. Easily adjusted to meet varying building heights. Also high pressure reducing valves for protection of plumbing fixtures.

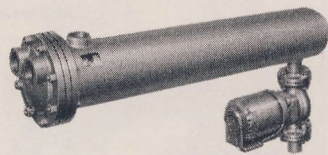
B & G Comfort Control System



Outdoor type, wind-compensating temperature control. The Regulator projects through the building wall, with the indoor end warmed by water in the radiation circuit. A small amount of this heat is conducted to the outside end, where it is dissipated at a rate dependent upon temperature and wind velocity. This heat dissipation governs the Control Valve, which permits hot boiler water to enter the system in required amounts.



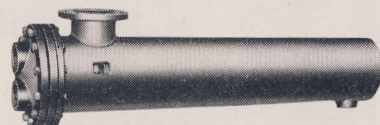
B & G Type "CWU" Radiation Heater



A "shell and tube" heat exchanger, installed below the water line of a steam boiler. Hot boiler water is pumped by a B & G Booster through the shell, thereby heating water for the heating system, which is pumped through tubes of Heater.

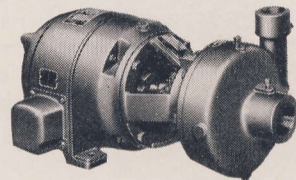
Pumping the water through both heater and heating system affords excellent temperature control, and permits use of much smaller pipe and fittings.

B & G Type "SU" Instantaneous Water Heaters



For heating water with steam. Ideal for industrial plants or wherever large volumes of hot water are required continuously for service water supply or process work. No storage tank required—the large heat transfer surface in these units heats water instantly as needed. Available in a wide range of capacities.

B & G Centrifugal Pumps



Design and construction based on years of experience in the industrial field. Rugged, compact units—built to withstand strain of continuous operation. Semi-open or enclosed impellers—motors flexible coupled or integral with pump.

← B & G Refrigeration Components

A very flexible line of direct expansion evaporators, condensers, liquid receivers, combination liquid receivers and subcoolers for refrigeration purposes are now available. Special alloys may be incorporated in the units for those critical heat transfer applications.